

Indicator light for DC 500 - 900 V

Type 8965 can be switched directly or else via a 24 V contact

8965



Description

Often it is necessary to signal a switching state and only the traction voltage is available.

Solutions using incandescent lamps and pre-resistances are always unsatisfactory. As a result of the large voltage fluctuations, the incandescent lamps barely light up at all or else they have a very short life. In addition, the sensitivity of incandescent lamps to vibration provides further difficulties.

A further problem is actuation. Often no contacts that can switch the contact wire voltage are available and control the relatively large surge currents (startup currents) of the incandescent lamps.

Seven LEDs are switched in series in the type 8965 indicator light. Pre-resistances and diodes limit the switching voltage to 24 V and the current to 1 mA at DC 900 V, whereby the indicator light can also be switched directly via a 900 V contact.

When switching on the indicator lights with auxiliary contacts with a permissible switching voltage of less than 900 V (switching via the third wire = control wire), there is no galvanic separation between the positive and negative potentials of the contact wire current.



Function

When switching the indicator light via the control cable (3rd conductor), a closed control contact puts out the indicator light (an opened control contact = lighting up of the indicator light).

Despite the small amount of current drawn at $I_N < 1 \text{ mA}$, the special built-in LEDs have excellent brightness.

The indicator lights are currently only available in red. Other colours on request. See the complete brochure folder for additional special devices for DC 600 V to DC 750 V.

Technical data

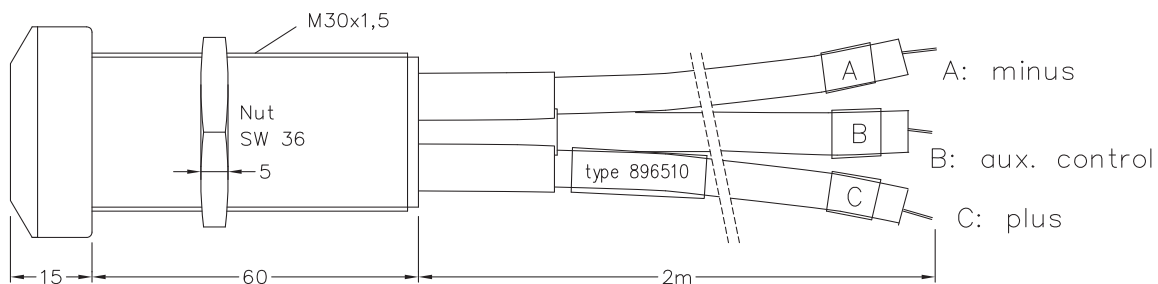
| | |
|----------------------------------------------|-------------------------------------------------------------------------------------------|
| Configuration | M 30 housing |
| Dimensions | see figure |
| Housing | Plastic |
| Attachment | Front panel installation with locknut (hole diameter 30 mm) |
| Configuration | 7 light emitting diodes (LEDs) |
| Colour | red |
| Voltage | DC 500 V to DC 900 V |
| Current | $\leq 1 \text{ mA}$ |
| Actuation | Contact data required |
| direct | Switching voltage DC 900 V Switching current $I \geq 1 \text{ mA}$ |
| Control cable (only 8965-3) | Switching voltage $\geq \text{DC } 24 \text{ V}$ Switching current $\geq 1 \text{ mA}$ |
| Connection | 3/2 individual cores fixed encapsulated, length 2 m (other lengths on request) |
| Protection against incorrect polarity | yes (no function / damage if incorrectly connected) |

Ordering information

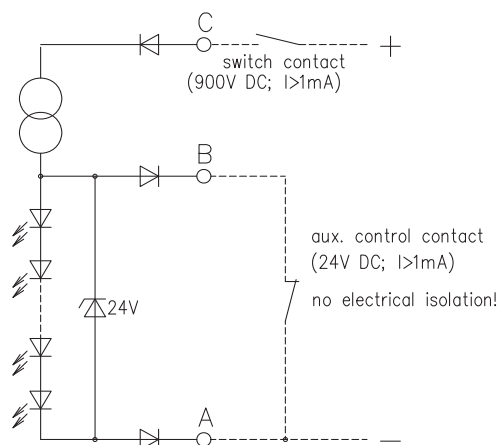
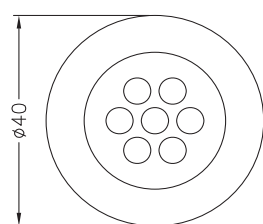
| Type | Part No. |
|---------|----------|
| 8965 10 | 910600 |
| 8965 00 | 910601 |

Special configurations on request.

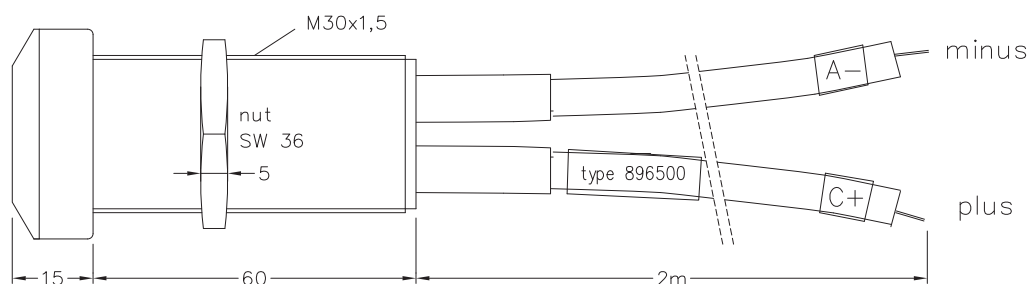
type 8965 10, part no. 910600



front view



type 8965 00, part no. 910601



front view

